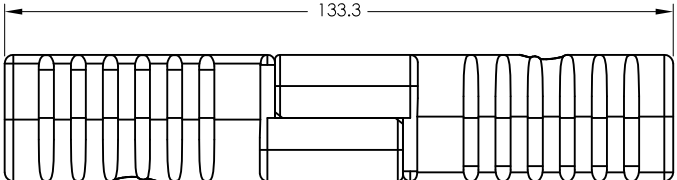
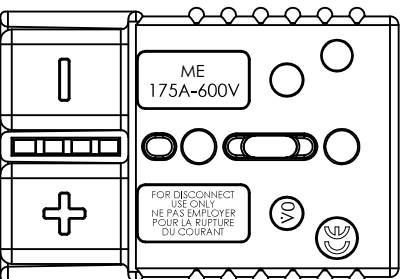
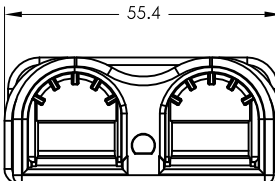
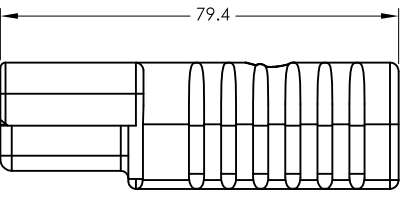


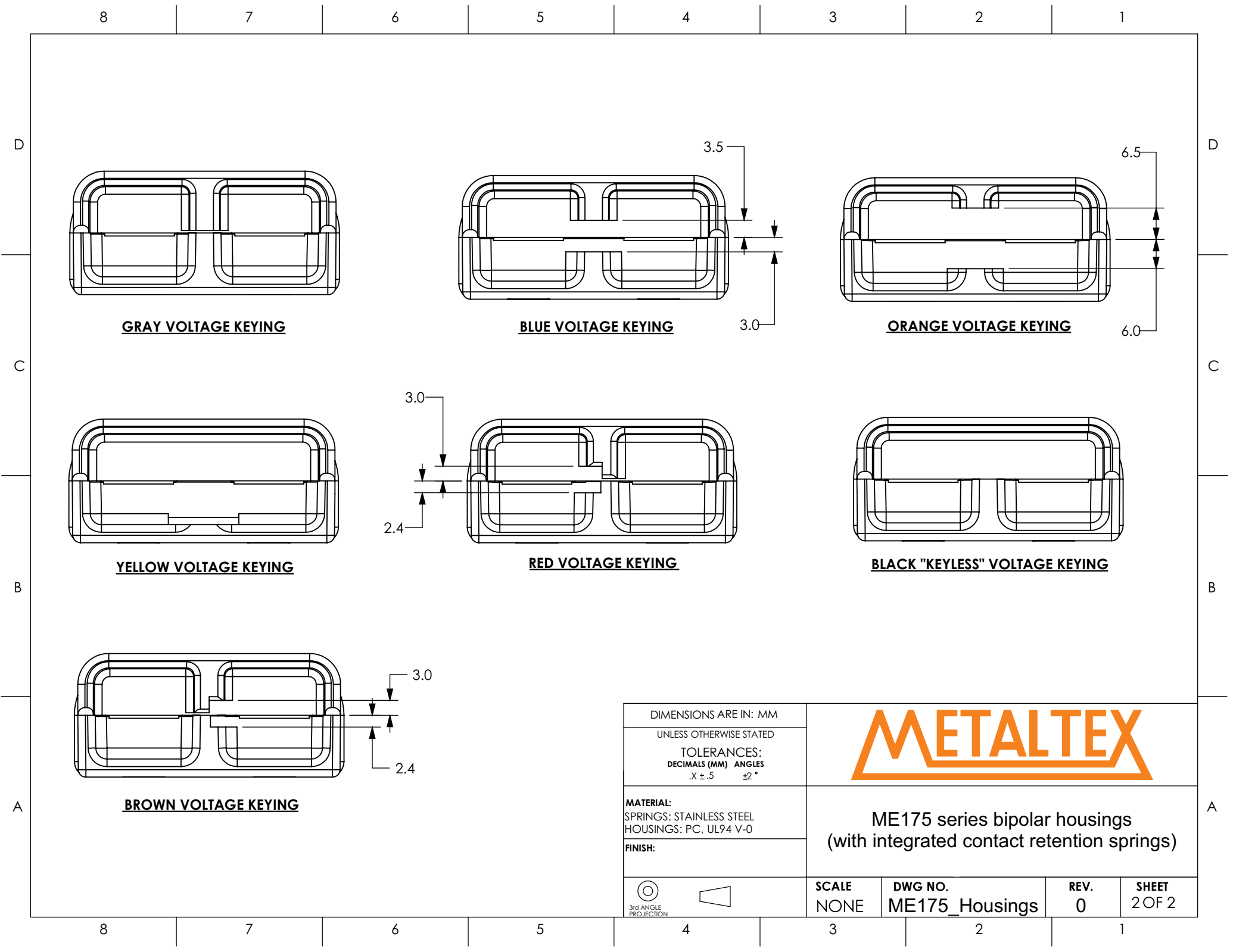
COLOR	P/N
GRAY	ME940
RED	ME949
BLACK	ME2-752G11
BLUE	ME941



MATED PAIR

1. HOUSING ARE KEYED TO ONLY ALLOW MATING WITH THE SAME COLOR HOUSINGS EXCEPT FOR THE BLACK HOUSING
2. HOUSING ASSEMBLIES ACCOMODATE METALTEX CONTACTS FOR WIRE RANGES FROM 25MM² (#4 AWG) TO 50MM² (#1/0AWG).

DIMENSIONS ARE IN: MM					
UNLESS OTHERWISE STATED					
TOLERANCES: DECIMALS (MM) ANGLES .X ± .5 ±2 °		ME175 series bipolar housings (with integrated contact retention springs)			
MATERIAL: SPRINGS: STAINLESS STEEL HOUSINGS: PC, UL94 V-0					
FINISH:					
		SCALE NONE	DWG NO. ME175_Housings	REV. 0	SHEET 1 OF 2



GRAY VOLTAGE KEYING

BLUE VOLTAGE KEYING



ORANGE VOLTAGE KEYING

YELLOW VOLTAGE KEYING

RED VOLTAGE KEYING

BLACK "KEYLESS" VOLTAGE KEYING

BROWN VOLTAGE KEYING

DIMENSIONS ARE IN: MM					
UNLESS OTHERWISE STATED					
TOLERANCES: DECIMALS (MM) ANGLES .X ± .5 ±2 °		ME175 series bipolar housings (with integrated contact retention springs)			
MATERIAL:					
SPRINGS: STAINLESS STEEL					
HOUSINGS: PC, UL94 V-0					
FINISH:					
		SCALE NONE	DWG NO. ME175_Housings	REV. 0	SHEET 2 OF 2